



Revista Mexicana de Biodiversidad

ISSN: 1870-3453

falvarez@ib.unam.mx

Universidad Nacional Autónoma de México  
México

Ramírez-Silva, Juan Pablo; González-Cózatl, Francisco Xavier; Vázquez-Domínguez, Ella; Cervantes, Fernando Alfredo

Phylogenetic position of Mexican jackrabbits within the genus *Lepus* (Mammalia: Lagomorpha): a molecular perspective

Revista Mexicana de Biodiversidad, vol. 81, núm. 3, 2010, pp. 721-731

Universidad Nacional Autónoma de México  
Distrito Federal, México

Available in: <http://www.redalyc.org/articulo.oa?id=42518439014>

- How to cite
- Complete issue
- More information about this article
- Journal's homepage in redalyc.org

redalyc.org

Scientific Information System

Network of Scientific Journals from Latin America, the Caribbean, Spain and Portugal

Non-profit academic project, developed under the open access initiative



## Phylogenetic position of Mexican jackrabbits within the genus *Lepus* (Mammalia: Lagomorpha): a molecular perspective

### Posición filogenética de las liebres mexicanas dentro del género *Lepus* (Mammalia: Lagomorpha): una perspectiva molecular

Juan Pablo Ramírez-Silva<sup>1\*</sup>, Francisco Xavier González-Cózat<sup>2</sup>, Ella Vázquez-Domínguez<sup>3</sup> and Fernando Alfredo Cervantes<sup>4</sup>

<sup>1</sup>Programa de Biología, Unidad Académica de Agricultura, Universidad Autónoma de Nayarit, Km. 9 Carretera Tepic-Compostela, 63780 Xalisco, Nayarit, México.

<sup>2</sup>Centro de Investigación en Biodiversidad y Conservación, Universidad Autónoma del Estado de Morelos, Av. Universidad 1001, 62209 Cuernavaca, Morelos, México.

<sup>3</sup>Departamento de Ecología de la Biodiversidad, Instituto de Ecología, Universidad Nacional Autónoma de México, Apartado postal 70-275, 04510 México, D.F., México.

<sup>4</sup>Departamento de Zoología, Instituto de Biología, Universidad Nacional Autónoma de México, Apartado postal 70-153, 04510 México, D.F., México.

\*Correspondencia: pablor@nayar.uan.mx; zacatuchemx@hotmail.com

**Abstract.** Although phylogenetic affinities of Mexican jackrabbits within the genus *Lepus* have been evaluated for a few species, no study has included all 5 species occurring in Mexico. In this study we assess the phylogenetic position of the Mexican species relative to other forms within the genus and evaluate evolutionary affinities among the Mexican forms. To do so, we analyzed 57 complete cytochrome *b* sequences belonging to the 5 Mexican jackrabbits and 18 species of *Lepus* distributed across Asia, Africa, Europe and America. We performed phylogenetic tree reconstruction with the neighbor-joining, maximum parsimony and maximum likelihood approaches. We also used a minimum spanning network to evaluate relationships among Mexican species. We found 5 main phylogenetic groups within *Lepus*, 4 of which corresponded to geographically well defined lineages. One group included *L. americanus*, 3 others corresponded to Mexican, African and European species, respectively. A fifth group included Asiatic, European and American forms. Our results suggest that Mexican species constitute a monophyletic entity that evolved independently of the other American species of *Lepus*. Within the Mexican forms, 2 main clades are apparent; 1 that includes *L. alleni*, *L. callotis*, and *L. flavigularis*, previously referred to as the white-sided jackrabbits, and a second one that groups together *L. californicus* and *L. insularis*, although *L. californicus* is a paraphyletic relative of *L. insularis*.

Key words: cytochrome *b*, Mexico, mitochondrial DNA, phylogeny.

**Resumen.** Aunque la afinidad filogenética de las liebres mexicanas, dentro del género *Lepus*, ha sido evaluada para algunas especies, ningún estudio ha incluido las 5 especies que se presentan en México. En este trabajo estimamos la posición filogenética de las especies mexicanas de liebres en relación con otras formas dentro del género, y evaluamos las afinidades evolutivas entre ellas. Para ello analizamos 57 secuencias completas del citocromo *b* pertenecientes a las 5 especies mexicanas y 18 especies de *Lepus* distribuidas en Asia, África, Europa y América. La reconstrucción filogenética se realizó mediante los procedimientos de neighbor-joining, máxima parsimonia y máxima verosimilitud. También se empleó el enfoque de redes de haplotipos para evaluar las relaciones entre las especies mexicanas. Observamos 5 grupos filogenéticos principales dentro de *Lepus*, de los cuales 4 corresponden a grupos geográficamente bien definidos: 1 grupo está constituido por *L. americanus*, otros 3 están formados por especies mexicanas, africanas y europeas, respectivamente. Un quinto grupo incluyó de manera conjunta a especies asiáticas, europeas y americanas. Nuestros resultados sugieren que las especies de liebres mexicanas forman un grupo monofilético que evolucionó independientemente de otras formas americanas. Dentro de las formas mexicanas existen aparentemente 2 clados principales; 1 que incluye *L. alleni*, *L. callotis* y *L. flavigularis*, previamente reconocidas como liebres de costados

blancos, y un segundo que agrupa a *L. californicus* y *L. insularis*, aunque *L. californicus* tiene una relación parafilética con *L. insularis*.

Palabras clave: citocromo *b*, México, ADN mitocondrial, filogenia.

## Introduction

The family Leporidae (hares, jackrabbits and rabbits), which includes 11 extant genera and approximately 56 species, is a successful group with a worldwide distribution, originally absent only from Australia and southern South America, West Indies, Madagascar and some Ethiopian islands, in many of which they have recently been introduced (Robinson, 1980; Chapman and Flux, 1990). Because of the intricate relationship of many leporid species with different ecosystems, as well as the commercial importance of game species, they have been the focus of ecological, genetic, and taxonomic studies (Corbet, 1978, 1983; Chapman and Flux, 1990; Halanych and Robinson, 1997, 1999). However, little is known about the evolutionary history of the family (Halanych et al., 1999; Wu et al., 2005).

The genus *Lepus* is the most diverse group within the family Leporidae, with 32 formerly recognized species, only followed by *Sylvilagus* and *Pronolagus* with 17 and 3 species, respectively (Hoffman and Smith, 2005). Despite being species-rich, this group shows little morphological variation, which has in turn made it difficult to define the taxonomic status of some of its species, as well as reconstructing their genealogical relationships.

Direct access to the genetic material of organisms (DNA) and development of modern methods of analysis have given new insights into the evolution of the genus *Lepus*. Halanych et al. (1999) performed the first more comprehensive study of the phylogenetic relationships of *Lepus*, including 11 species and using partial sequences of cytochrome *b*. They report different tree topologies generated by distinct reconstruction methods, concluding that *Lepus* species from North America are not a monophyletic group and that the taxonomic status of some lineages should be reevaluated. In a later phylogenetic study that included 11 species of *Lepus*, also using partial cytochrome *b* sequences, Yamada et al. (2002) confirmed that North American *Lepus* are not monophyletic, since some American forms are grouped within the clade comprising African, European and Japanese species. In the most recent work concerning the evolution of the genus *Lepus*, Wu et al. (2005) analyzed partial cytochrome *b* sequences of 23 species and demonstrated that although some clades display certain geographic cohesion, patterns of current distribution within each of the main continental

regions, may not be explained by local monophyletic origins.

Although previous studies on the phylogeny of *Lepus* have included representative species from North America, none of these have included all forms that are found in Mexico. This country is one of the most diverse in terms of number of species, since 5 *Lepus* species, which together are commonly known as jackrabbits (Flux and Angermann, 1990; Hoffman and Smith, 2005), occur here. One species, *L. californicus*, displays a wide distribution from southwestern United States (USA) to central Mexico. Two other species have most of their distribution in Mexico, although they may also be found in restricted areas in USA near the border with Mexico: *L. alleni* occurs on the entire north coast of the Mexican Pacific to southern Arizona (USA), and *L. callotis* is distributed from Oaxaca in southern Mexico to Chihuahua in northern Mexico, with a population in southern New Mexico (USA). On the other hand, *L. flavigularis* and *L. insularis* are endemic species of Mexico; the former occurring in a small tropical region of the Isthmus of Tehuantepec in the state of Oaxaca, and the latter in the Espiritu Santo Island, Baja California Sur. These 5 species, with all or most of their geographical range in Mexico, represent the southernmost distribution of the genus in the American continent.

The objectives of the present study were: 1) to assess the phylogenetic position of the Mexican species within the genus *Lepus*, in order to discern if all Mexican forms share a common origin or if they are the result of independent evolutionary events, and 2) to evaluate the evolutionary affinities among the Mexican species, in order to test previous hypotheses that suggest a close relationship among certain forms (Anderson and Gaunt, 1962; Dixon et al., 1983; González-Cózatl, 2000). To accomplish this, we analyzed nucleotide sequence data of the complete cytochrome *b* gene of all 5 Mexican forms of *Lepus* and compared them with those of other representative species from Asia, Africa, Europe and America, encompassing the complete geographical range distribution of the genus. We also analyzed a group of partial sequences of this same gene representing different localities of the Mexican forms.

## Materials and methods

A matrix of complete cytochrome *b* (cyt *b*) nucleotide

sequences (1 140 bp) of 57 individuals representing 23 species of *Lepus* was built (see Table 1). Twenty-three *Lepus* sequences were obtained from the DDBJ/EMBL/GenBank International Nucleotide Sequence Databases and the remaining 28 (remaining 28 (Accession numbers HQ596458-HQ596485) were from González-Cózatl (2000) (Table 1). In addition, 4 sequences were used as outgroups from *Oryctolagus*, *Sylvilagus*, *Romerolagus* (González-Cózatl, 2000) and *Pentalagus* (GenBank).

Alignment of sequences was performed with the multiple alignment program Clustal W (Thompson et al., 1994) and corrected by hand for obvious alignment errors. Assessment of sequence composition was done in order to evaluate frequencies for variable and parsimonious informative sites in the first, second and third codon positions, with the DNAsp program (Rozas and Rozas, 1999). This analysis was done with and without outgroups.

Phylogenies were estimated using maximum parsimony (MP) and the minimum evolution (as implemented in the Neighbor Joining algorithm; NJ) optimality criteria using PAUP\* (version 4.0 beta; Swofford, 2002). Additionally, the maximum likelihood (ML) approach was performed using the program PHYML (Guindon and Gascuel, 2003). The best-fit model of evolution for the NJ and ML procedures was identified based on the hierarchical likelihood-ratio test under the Akaike Information Criterion implemented in Modeltest 3.06 (Posada and Crandall, 1998). Based on previous *Lepus* studies with *cyt b* (Halanych et al., 1999; Yamada et al., 2002) and in order to facilitate comparisons among studies, we also performed NJ and ML analysis using Kimura's (1980) two-parameter model (K2P), with a  $\gamma$  correction ( $\alpha = 0.5$ ). MP analyses were based on heuristic searches with 1000 random additions and implementing the tree bisection-reconnection (TBR) algorithm. NJ reconstruction was conducted employing genetic distances corrected under the optimal evolution model selected by ModelTest. ML analyses were performed following the algorithm of Guindon and Gascuel (2003), also using the best-fit model of evolution for the *cyt b* data. Confidence in resulting nodes was assessed using the bootstrap approach (Felsenstein, 1985) with 1000 replicates for NJ, MP and 500 for ML. Monophyly of Mexican *Lepus* was tested by conducting tree searches with constraints configured to match tree topologies where Mexican jackrabbits form a monophyletic group. Alternative tree topologies were evaluated for statistical significance using the Shimodaira and Hasegawa test (S-H; Shimodaira and Hasegawa, 1999) under the maximum likelihood criterion as implemented in PAUP\* (version 4.0; Swofford, 2002). Ten thousand bootstrap replicates were performed using the S-H test by resampling the partial likelihoods for each site (RELL model).

Net nucleotide divergence (*Da*) (Nei, 1987) was estimated between the resulting major clades in the phylogenetic tree (see Results) to assess patterns of genetic differentiation within *Lepus*. To do this we employed the DNAsp program using the Jukes and Cantor correction. Kimura two-parameter genetic distances were estimated with MEGA 3.0 software (Kumar et al., 2004) in order to do pairwise comparisons among and within main clades. Standard errors were estimated by the bootstrap method with 10 000 replicates.

Additionally, phylogenetic affinities among Mexican species of *Lepus* were evaluated by doing a minimum spanning network, which illustrates the minimum number of mutational steps between haplotypes, constructed using TCS 1.20 at  $p \geq 0.95$  (Clement et al., 2000). Under this approach we analyzed *cyt b* partial nucleotide sequence (620 bp) from 18 individuals of species with distribution in Mexico, including redundant sequences (Accession numbers AY292731, AF010156-160; Table 1). Also, a Mantel test was used to measure the correlation between the individuals pairwise geographical distances (km) with the individuals pairwise genetic distances, using ARLEQUIN 2.0 (Schneider et al., 2000).

## Results

**Phylogenetic analyses.** Of the 1140 positions examined, 497 were variable (43.6%), and 393 (34.5%) were parsimony informative. The majority of the variable sites (90%), as well as most of the parsimony informative sites (79.7%) occurred at the third codon position. When outgroup taxa were excluded from the analysis, the same proportion of variable and informative sites were obtained in the complete gene. Also most of these variable and parsimony informative sites occurred at the third codon position.

The parsimony searches generated 88 most parsimonious trees, with length ( $L = 1980$ ), consistency index ( $CI = 0.354$ ) and retention index ( $RI = 0.681$ ; trees not shown, but see below). The General Time Reversible model (GTR; Rodríguez et al., 1990) of DNA substitution was selected as the most appropriate for our data (base frequencies  $A = 0.2899$ ,  $C = 0.3309$ ,  $G = 0.1160$ ,  $T = 0.2676$ , proportion of invariant sites  $I = 0.4978$ , and shape parameter  $\alpha = 1.0920$ ). NJ and ML reconstruction methods recovered the same topology whether constructed with the K2P or the GTR models. Very similar trees were obtained with all methods, ML, NJ and MP, with only minor topological differences within groups. Accordingly, results are described based on the phylogenetic topology depicted

**Table 1.** Keys to the species, source and localities for the sequences (the source displays the GenBank accession numbers). In brackets are the codes of the Mexican species used for the minimum spanning network analysis (see figure 2)

Key	Source	Locality	Phylogenetic Group
<i>L. alleni</i> 1 (all1)	HQ596458	Sonora, Mexico	B
<i>L. alleni</i> (all2)	AF010157	Tiburón island, Mexico	
<i>L. alleni</i> (all3)	AF010156	Sonora, Mexico	
<i>L. americanus</i> 1	HQ596459	Alaska, USA	A
<i>L. americanus</i> 2	HQ596460	Utah, USA	A
<i>L. americanus</i> 3	AY292733	USA	A
<i>L. arcticus</i>	HQ596461	Greenland	E
<i>L. brachyurus</i> 1	AB058615	Japan	E
<i>L. brachyurus</i> 2	AB058616	Japan	E
<i>L. californicus</i> 1 (ca1)	HQ596462	Chihuahua, Mexico	B
<i>L. californicus</i> 2 (ca2)	HQ596463	EdoMex, Mexico	B
<i>L. californicus</i> 3 (ca3)	HQ596464	BCS, Mexico	B
<i>L. californicus</i> 4 (ca4)	HQ596465	BCS, Mexico	B
<i>L. californicus</i> 5 (ca5)	HQ596466	Utah, USA	B
<i>L. californicus</i> (ca6)	AF010160	NM, USA	
<i>L. californicus</i> (ca7)	AY292731	unknown	
<i>L. callotis</i> 1 (call1)	HQ596467	Chihuahua, Mexico	B
<i>L. callotis</i> 2 (call2)	HQ596468	Jalisco, Mexico	B
<i>L. callotis</i> 3 (call3)	HQ596469	Jalisco, Mexico	B
<i>L. callotis</i> (call4)	AF010159	NM, USA	
<i>L. callotis</i> (call5)	AF010158	NM, USA	
<i>L. capensis</i> 1	HQ596470	Africa	C
<i>L. capensis</i> 2	HQ596471	South Africa	C
<i>L. comus</i> 1	AJ279404	China	E
<i>L. comus</i> 2	AJ279406	China	E
<i>L. coreanus</i>	HQ596472	Korea	E
<i>L. europaeus</i> 1	HQ596473	Sweden	D
<i>L. europaeus</i> 2	HQ596474	Poland	D
<i>L. flavigularis</i> (fla)	HQ596475	Oaxaca, Mexico	B
<i>L. granatensis</i>	HQ596476	Spain	D
<i>L. hainanus</i>	AY599077	China	E
<i>L. insularis</i> 1 (in1)	HQ596477	Espiritu Island, Mexico	B
<i>L. insularis</i> 2 (in2)	HQ596478	Espiritu Island, Mexico	B
<i>L. mandshuricus</i> 1	AJ279422	China	E
<i>L. mandshuricus</i> 2	AJ279423	China	E
<i>L. oiostolus</i> 1	AJ279426	China	E
<i>L. oiostolus</i> 2	AJ279427	China	E
<i>L. othus</i>	HQ596479	Alaska	E
<i>L. saxatilis</i> 1	AY292730	Africa	C
<i>L. saxatilis</i> 2	HQ596480	Africa	C
<i>L. sinensis</i> 1	HQ596481	China	E
<i>L. sinensis</i> 2	AJ279418	China	E
<i>L. sinensis</i> 3	AJ279419	China	E
<i>L. sinensis</i> 4	AJ279420	China	E
<i>L. sinensis</i> 5	AJ279421	China	E
<i>L. timidus</i> 1	AJ279425	China	E
<i>L. timidus</i> 2	HQ596482	Sweden	E
<i>L. timidus</i> 3	AJ279424	China	E
<i>L. timidus</i> 4	HQ596483	Switzerland	E
<i>L. timidus</i> 5	AB058607	Japan	E
<i>L. timidus</i> 6	HQ596484	Norway	E
<i>L. tolai</i> 1	AY649616	Central Asia	E
<i>L. tolai</i> 2	AY649617	Central Asia	E
<i>L. tolai</i> 3	AY649618	Central Asia	E
<i>L. townsendii</i> 1	HQ596485	Utah, USA	E
<i>L. townsendii</i> 2	AY292729	USA	E
<i>L. yarkandensis</i>	AY805394	China	E
<i>Oryctolagus cuniculus</i>	HQ596486	Spain	Outgroup
<i>Pentalagus furnessi</i>	AB058606	Japan	Outgroup
<i>Romerolagus diazi</i>	HQ596487	Mexico	Outgroup
<i>Sylvilagus audubonii</i>	HQ596488	Mexico	Outgroup

with ML constructed with the GTR model (Fig. 1). Overall, samples of *Lepus* were grouped into 5 main clades. Group A corresponded to representatives of *L. americanus*, and was placed as a basal group within the genus, with relatively high bootstrap values (NJ and MP). Another clade (Group B) was constituted exclusively for the “Mexican” species (*L. californicus*, *L. insularis*, *L. alleni*, *L. flavigularis*, and *L. callotis*), and strongly supported by MP, ML, and NJ bootstrap values. As sister groups of the “Mexican” clade, the groups C, D, and E appeared. Groups C and D were formed by 2 exclusively African species, *L. capensis* and *L. saxatilis* and 2 exclusively European ones, *L. europaeus* and *L. granatensis*, respectively. Finally, group E encompassed forms found in Asia (*L. timidus*, *L. sinensis*, *L. comus*, *L. oiostolus*, *L. brachyurus*, *L. mandshuricus*), Europe (*L. timidus*), and North America (*L. arcticus*, *L. othus*, and *L. townsendii*), although bootstrap support for this clade was relatively low (Fig. 1). Tree searches under constraints (no monophyly of Mexican *Lepus*) produced significantly less likely tree topologies than those where Mexican jackrabbits are a monophyletic clade (Log Score Difference = 564.34; p-value < 0.0001).

Within the “Mexican forms”, *L. californicus* resulted in a paraphyletic group since samples *L. californicus* 1 and 2 were more closely related to representatives of *L. insularis* than to other samples of *L. californicus*. Additionally, *L. alleni*, *L. callotis*, and *L. flavigularis* formed a separate clade, where the last 2 forms are more closely related to each other (Fig. 1).

**Genetic differentiation.** Genetic distances estimated among groups varied from 10.8% between groups B and D, to the most distant values between group A and both C and E

groups, 13.8 and 13.6%, respectively (Table 2). Values were also high between groups A and D, and between E and C (12.7 and 13.1 %, respectively). Estimates of genetic differentiation within groups were comparatively low for group B (2.5 %), whereas groups A and D displayed intermediate levels of differentiation (7.4 and 6.6 %, respectively); high values of genetic distances were shown for groups C and E (10.6 and 10.7 %, respectively; Table 2). On the other hand, high nucleotide divergence values were observed between group A and group B, C and D (5.6-6.0%); noticeably, the highest value occurred between groups B and D (6.4%) that had the lowest genetic distance. The lowest divergence value (4.3%) was between group E and both C and D (Table 3).

The probability of parsimonious connections at  $p \geq 0.95$  in the minimum spanning network analysis was statistically justified for haplotypes that differed up to 11 mutational differences. Each analyzed sequence corresponded to a different haplotype, only *L. callotis* 4 and 5, and *L. callotis* 2 and 3 share the same haplotype respectively. This analysis generated independent haplotype networks for each of the “Mexican” species, with the exception of samples of *L. californicus* and *L. insularis*, which were grouped together into a single network. (Fig. 2). This approach revealed high haplotype differentiation among species. Also, results of the Mantel test were significant ( $r = 0.207$ ,  $P = 0.038$ ).

## Discussion

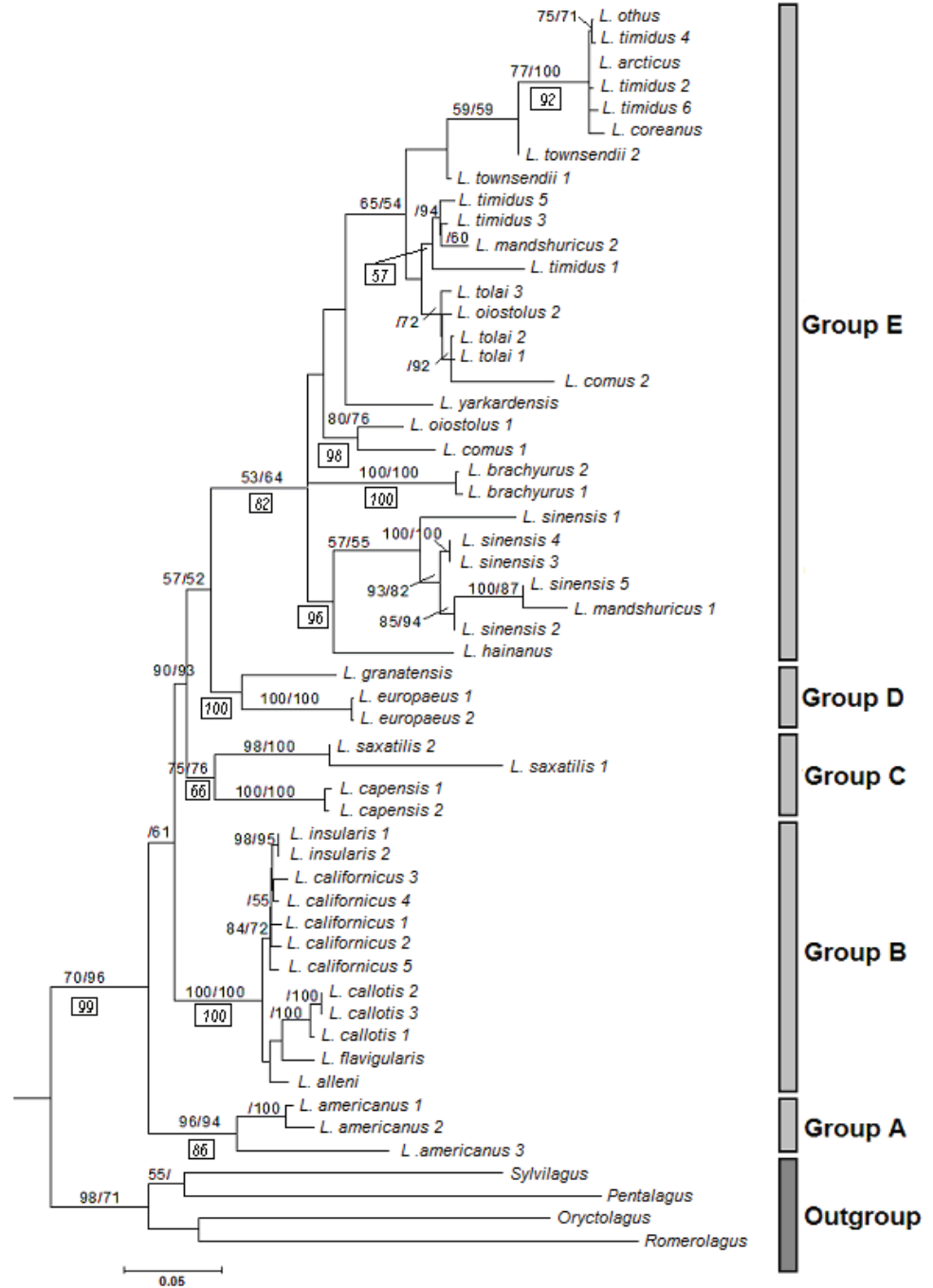
**Phylogenetic analysis.** This study represents a considerably

**Table 2.** Mean genetic distances between the 5 groups of *Lepus* (below diagonal) and within groups (on the diagonal in bold case). Distances are from the complete cytochrome *b* sequence, estimated with MEGA 2.0, using the Kimura 2-parameter method and *g* correction ( $\alpha = 0.5$ ). Standard errors were estimated by the bootstrap method with 10 000 replications (above diagonal)

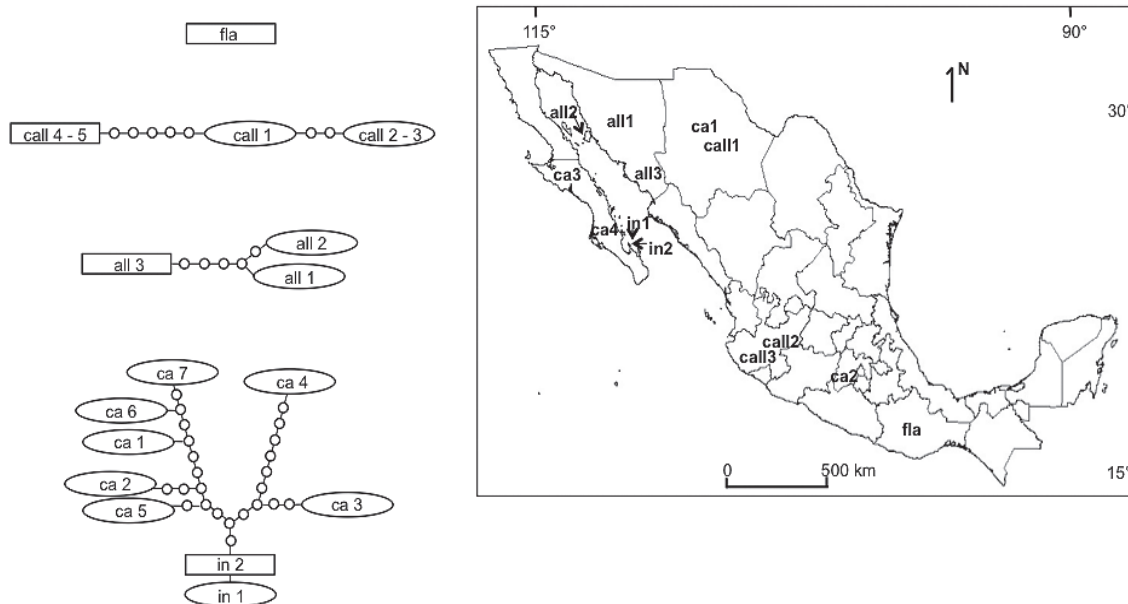
	Group A	Group B	Group C	Group D	Group E
Group A	<b>0.074</b>	0.009	0.010	0.009	0.009
Group B	0.112	<b>0.025</b>	0.008	0.009	0.008
Group C	0.138	0.111	<b>0.106</b>	0.009	0.008
Group D	0.127	0.108	0.122	<b>0.066</b>	0.008
Group E	0.136	0.122	0.131	0.122	<b>0.107</b>

**Table 3.** Nucleotide divergence (*Da*) between groups of *Lepus* (DnaSP; Rozas and Rozas 1999)

	Group A	Group B	Group C	Group D
Group B	0.060			
Group C	0.057	0.060		
Group D	0.056	0.064	0.049	
Group E	0.052	0.049	0.043	0.043



**Figure 1.** Maximum likelihood tree of the complete cytochrome *b* sequence, based on the General Time Reversible model (GTR; Rodríguez et al., 1990) of DNA substitution (A = 0.2899, C = 0.3309, G = 0.1160, T = 0.2676; I = 0.4978; and  $\alpha$  = 1.0920), using the program PHYML and the algorithm of Guindon and Gascuel (2003). Bootstrap values > 50% for maximum likelihood and neighbor-joining analyses (ML/NJ) are given above nodes and maximum parsimony (MP) values are in rectangles.



**Figure 2.** Minimum spanning network of the 5 species of *Lepus* that are distributed in Mexico. Circles along the lines indicate number of mutational steps or missing intermediate haplotypes. Codes are, call: *L. callotis*; ca: *L. californicus*; in: *L. insularis*; fla: *L. flavigularis*; all: *L. alleni*. The location (Mexican state) of each sample on the map is indicated in Table 1. ca5, 6: USA (New Mexico, Utah), ca7 (unknown), call4, 5: USA (New Mexico) are not on the map.

comprehensive sampling of *Lepus*, in terms of number of species, geographical extent, and sequence size, though it unfortunately excludes a few species, mainly from Africa and Europe (*L. castroviejoi*, *L. corsicanus*, *L. fagani*, *L. habessinicus*, *L. microtis*, *L. nigricollis*, *L. peguensis*, *L. starcki*, and *L. tibetanus*), for which no complete *cyt b* sequences could be obtained. The sequence variation on the entire *cyt b* gen of *Lepus* displays the typical variability proportion found in other mammals, although the percentage of variable and informative sites showed a marked increase with respect to values previously reported for leporids (Halanych and Robinson, 1999) and *Lepus* (Halanych et al., 1999), based on partial *cyt b* sequences.

In general, main phylogenetic clades corresponded well with the geographical distribution of species. Group A included samples of *L. americanus*, which occurs exclusively in North America. Group B grouped forms that are distributed in Mexico (*L. alleni*, *L. insularis*, *L. flavigularis*), and southern North America (*L. californicus*, *L. callotis*). Although group C included species with a broad distribution, such as *L. capensis*, samples recovered in this clade are restricted to Africa. Group D holds species occurring exclusively in Europe. The exception to the described pattern is found in group E, which comprises species from Asia, Europe, and North America (Fig. 1).

The placement of North American taxa (*L. arcticus*, *L. othus*, and *L. townsendii*) within group E, which is clearly separated from other forms occurring in this region (groups A and B), suggests a non-monophyletic origin of the *Lepus* in North America. This finding is congruent with previous hypotheses regarding the evolutionary relationships among North American forms based on molecular evidence (Halanych et al., 1999; Matthee et al., 2004; Wu et al., 2005).

Although Halanych et al. (1999) suggested that, within North American hares, *L. americanus* is more closely related to the Mexican species of *Lepus* (their Western American clade) than to the Arctic hares, our findings do not support this opinion. Phylogenetic trees show that *L. americanus* (group A) and the Mexican species (group B) are not closely related. Rather, *L. americanus* was placed as the most basal lineage within the genus, suggesting that this group represents an early offshoot in the evolution of the genus; a scenario that is congruent with that of Matthee et al. (2004) and Wu et al. (2005). On the other hand, the Mexican species clade (group B) constitutes a second more basal lineage, which is placed as the sister clade to the remaining *Lepus* species (groups C, D, and E), suggesting that the Mexican lineage is closer related to the Arctic forms than to *L. americanus*. Admittedly,



bootstrap support for this relationship is not strong, but a similar evolutionary scenario has been reported by Matthee et al. (2004), who employed a supermatrix of nuclear and mitochondrial genes, and Wu et al. (2005), who used a partial *cyt b* data sequences data set (~ 700 bp). This consistent pattern suggests that the Mexican lineage (group B) originated independently of *L. americanus* and the Arctic forms, and if so, evolution of North American *Lepus* must have implied, at least, 3 major speciation events. Levels of genetic differentiation between Mexican jackrabbits and other clades ranged from 10.8 to 12.2% suggesting a significant degree of evolutionary divergence of this lineage with respect to other groups of hares. On the other hand, values of genetic distance within the Mexican jackrabbits were comparatively the lowest (2.5 %; Table 2) among all clades found, supporting a close evolutionary affinity among the Mexican species.

Although the assessment of the evolution of the genus as a whole is beyond the objectives of this study, our results confirm previous hypotheses based on fossil and molecular data. Particularly, our analyses agree with earlier hypotheses that suggest an American origin of *Lepus* at about 10.7 – 11.8 million years ago (Mya) and a posterior radiation to other continents from North America approximately 5.1 – 5.6 (Hibbard, 1963; Matthee et al., 2004; Wu et al., 2005). According to molecular data, *L. americanus* is suggested to represent an independent and one of the oldest lineages within the genus (Matthee et al., 2004; Wu et al., 2005). This small species, adapted to life in or near boreal forests, was considered to be morphologically more similar to members of the genus *Sylvilagus* than to members of its own genus (White and Keller, 1984). Furthermore, it was suggested that *L. americanus* could be distantly related to other hares and jackrabbits and may warrant a separate generic designation (Flux, 1983). However, this present study and other studies have indicated that this species is correctly classified as a hare (Halanych et al., 1999; Yamada et al., 2002; Matthee et al., 2004; Wu et al., 2005), but it represents the sister group of the remaining species within the genus, which together represent forms that prefer open or semi-open country. Thus, it seems plausible that an initial spilt within the genus involved the adaptation to quite distinct ecological requirements for each of the resulting groups. In fact, Matthee et al. (2004) suggested that the initial trigger for the continental dispersal of the genus *Lepus* was the global development of grasslands at about 7 to 5 Mya. If so, it makes sense that most forms adapted to open or semi-open areas (including the Mexican species) are consistently grouped together (groups B, C, D, and E). Nonetheless, it seems that within grassland adapted forms, a lineage remained in North America (Mexican species; group B) while other lineages (groups C, D, and

E) dispersed into other continents. However, considering that some members of group E are currently found in North America (*L. arcticus*, *L. othus*, and *L. townsendii*), their occurrence in this region might be explained by a secondary interchange between continents that resulted in the invasion of North America by some Asian forms through a land bridge, as suggested by Halanych et al. (1999).

*The Mexican species.* Although prior studies had included samples of species that occur in Mexico, this research is the first that incorporates representatives of all forms occurring in this country (*L. californicus*, *L. alleni*, *L. insularis*, *L. callotis*, and *L. flavigularis*). As indicated above, our results suggested a common evolutionary history of these species since all of them were consistently recovered as a monophyletic clade with strong nodal support (Fig. 1; group B). This phylogenetic pattern is congruent with the view of Anderson and Gaunt (1962) who suggested a close affinity among *L. alleni*, *L. callotis*, *L. flavigularis*, and *L. californicus*, based on morphological and distributional criteria. Although *L. insularis* was not included in the study by Anderson and Gaunt (1962), later evaluations pointed out a close relationship between this species and *L. californicus* (see below).

Within the Mexican clade, there are 2 apparent main lineages: 1 constituted of *L. californicus* and *L. insularis*, and a second one that included *L. alleni*, *L. callotis*, and *L. flavigularis*. Although nodal support is only relatively strong for the first group, and, therefore interpretations should be taken cautiously considering that we analyzed only a few samples for the Mexican species, but the recognition of this grouping pattern is congruent with previous hypothesis regarding relationships among these species (Anderson and Gaunt, 1962).

The particular relationship between *L. insularis* and *L. californicus* was supported by bootstrap proportions over 72% (Fig. 1). Also, the haplotype network approach suggested a close relationship between these 2 species (Fig. 2). This coincides with the analysis by Dixon et al. (1983) suggesting a close affinity between these 2 species. Nonetheless, results also indicated that *L. californicus* is a paraphyletic relative to *L. insularis*. All our analyses demonstrated that some haplotypes of *L. californicus* (3 and 4) are more closely related to *L. insularis* than to other haplotypes of *L. californicus* (Fig. 1). Also, the TCS network showed that the pathway connecting *L. californicus* haplotypes 3 and 4 to *L. insularis* haplotypes implies less mutational steps than those connections to other samples of *L. californicus* (Fig. 2). Although *L. insularis* is recognized as a distinct species from *L. californicus* based on an analysis of cranial features (Dixon et al., 1983), its species-level status has been questioned (Chapman et al., 1983; Flux,

1983). *L. californicus* has the most widespread distribution of the 5 species, while *L. insularis* occurs exclusively in Espíritu Santo, an island of volcanic origin in the Gulf of California that has been present for only 5 000 – 12 000 years (Faeth and Connor, 1979). It is thought that this species is derived from a population of *L. californicus* from the nearby peninsula of Baja California (Thomas and Best, 1994). Paraphyly is a phenomenon that has been reported in other hare species and has been explained through mechanisms such as retention of ancestral polymorphism (Pérez-Suárez et al., 1994) or ancient introgression (Thulin et al., 1997; 2006; Thulin and Tegelstr, 2002; Alves et al., 2003; 2008; Melo-Ferreira et al., 2007;). Nonetheless, it is clear that our results are based on a limited sampling and that the interpretation of the paraphyletic relationship of *L. californicus* to *L. insularis* should wait for additional data. If the results obtained in this study actually reflect the species phylogeny, *L. insularis* would represent an isolated population of *L. californicus*. Evidently, a more detailed sampling and information from alternative markers are required to evaluate the specific status of *L. insularis* relative to *L. californicus*.

The second main lineage within Mexican jackrabbits includes *L. alleni*, *L. callotis* and *L. flavigularis* (Fig. 2), a group that is consistent with the view of Anderson and Gaunt (1962) who proposed a close relationship among these species based on morphological and distributional evidence. These 3 species have traditionally been grouped as the white-sided jackrabbits. Anderson and Gaunt (1962) suggest a common origin of these species from a population of *L. californicus* that could have become isolated in Mexico and diverged into a new lineage that was the original stock of the white-sided jackrabbits. From this main stock (*L. callotis*), one population was isolated on the western coastal plains (*L. alleni*). Later, a second population was isolated in a small region in the Isthmus of Tehuantepec near the Pacific coast and became a different species (*L. flavigularis*). Although it is clear that our results are weakly supported regarding relationships among these species, and they are based on only a few individuals, the phylogenetic pattern obtained is congruent with the hypothesis of Anderson and Gaunt (1962). Under the haplotype network analysis, the probability of parsimonious connections at  $p \geq 0.95$  was not statistically justified to connect haplotypes of these species, suggesting that all 3 taxa represent independent lineages (Fig. 2).

It is particularly important to mention that *L. californicus*, *L. insularis*, *L. alleni*, *L. flavigularis*, and *L. callotis*, are all listed as endangered, vulnerable or under special protection by the Mexican government and/or the IUCN (Hilton-Taylor, 2000; Semarnat, 2002). Recently, Rico et al. (2008) showed that *L. flavigularis* possesses a

reduced genetic variability and is subdivided into highly divergent lineages. These findings have tremendous implications for conservation and indicate the need of further research regarding the ecology and population genetics of the remaining Mexican species. A complete phylogeographic study will help elucidate how the intricate geological and biogeographical history of Mexico has shaped the present distribution of these species, and will ultimately provide information for a thorough evaluation of those species facing conservation problems.

### Acknowledgments

We thank A. Vázquez-Lobo for her kind assistance with endless phylogenetic analyses questions. EVD acknowledges support from the Instituto de Ecología, UNAM. We are grateful to 2 anonymous reviewers for their comments that helped improve the manuscript. The first author was the recipient of a scholarship from Conacyt (No 153852).

### Literature cited

- Alves, P. C., N. Ferrand, F. Suchentrunk and D. J. Harris. 2003. Ancient introgression of *Lepus timidus* mtDNA into *L. granatensis* and *L. europaeus* in the Iberian Peninsula. *Molecular Phylogenetics and Evolution* 27:70-80.
- Alves, P. C., J. Melo-Ferreira, H. Freitas and P. Boursot. 2008. The ubiquitous mountain hare mitochondria: multiple introgressive hybridization in hares, genus *Lepus*. *Philosophical Transactions of the Royal Society, B*. 363:2831-2839.
- Anderson, S. and A. S. GAunt. 1962. A classification for the white -sided jackrabbits of Mexico. *American Museum Novitates* 2088:1-16.
- Chapman, J. A., K. R. Dixon, W. Lopez-Forment, and D. E. Wilson. 1983. The New World jackrabbits and hares (genus *Lepus*).-1. Taxonomic history and population status. *Acta Zoologica Fennica* 174:49-51.
- Chapman, J. A. and J. E. C. Flux. (Eds). 1990. Rabbits, hares and pikas, status survey and conservation action plan. IUCN, Gland, Switzerland. 168 p.
- Clement M., D. Posada and K. A. Crandall. 2000. TCS: a computer program to estimate gene genealogies. *Molecular Ecology* 9:1657-1660.
- Corbet, G. B. 1983. A review of the classification in the family Leporidae. *Acta Zoologica Fennica* 174:11-15.
- Dixon, K. R., J. A. Chapman, G. R. Willner, D. E. Wilson and W. López-Forment. 1983. The New World jackrabbits and

- hares genus *Lepus*. 2. Numerical taxonomic analysis. *Acta Zoologica Fennica* 174:53-56.
- Faeth, S. H. and E. F. Connor. 1979. Supersaturated and relaxing island faunas: A critique of the species-age relationship. *Journal of Biogeography* 6:311-316.
- Felsenstein, J. 1985. Confidence limits on phylogenies: an approach using the bootstrap. *Evolution* 39:783-791.
- Flux, J. E. C. 1983. Introduction to taxonomic problems in hares. *Acta Zoologica Fennica*, 174:7-10.
- González-Cózatl, F. 2000. Molecular Systematics of the Genus *Lepus* in North America (Mammalia: Lagomorpha). Ph. D. Thesis. Brigham Young University, USA. 69 p.
- Flux, J. E. C. and R. Angermann. 1990. The hares and jackrabbits. *In* Rabbits, hares and pikas, status survey and conservation action plan, J. A. Chapman and J. E. C. Flux. (eds.). IUCN, Gland, Switzerland. p. 61-94.
- Guindon, G. and O. Gascuel. 2003. A simple, fast, and accurate algorithm to estimate large phylogenies by maximum likelihood. *Systematic Biology* 52:696-704.
- Halanych, K. and T. J. Robinson. 1997. Phylogenetic relationships of cottontails *Sylvilagus* (Lagomorpha): congruence of 12S rDNA and cytogenetic data. *Molecular Phylogenetics and Evolution* 7:294-302.
- Halanych, K. and T. J. Robinson. 1999. Multiple substitutions affect the phylogenetic utility of cytochrome *b* and 12S rDNA data: examining a rapid radiation in Leporid (Lagomorpha) evolution. *Journal of Molecular Evolution* 48:369-379.
- Halanych, K., J. Dembosky, B. Van Vuuren, D. Klein and A. Cook. 1999. Cytochrome *b* phylogeny of North American hares and jackrabbits *Lepus* (Lagomorpha) and the effects of saturation in outgroup taxa. *Molecular Phylogenetics and Evolution* 11:213-221.
- Hibbard, C. 1963. The origin of the P3 pattern of *Sylvilagus*, *Caprolagus*, *Oryctolagus* and *Lepus*. *Journal of Mammalogy* 44:1-15.
- Hilton-Taylor, C. 2000. IUCN Red List of Threatened Species. IUCN, Glanz, Switzerland. CD-ROM.
- Hoffmann, R. S. and A. T. Smith. 2005. Order Lagomorpha. *In* Mammal species of the world: a taxonomic and geographic reference, D. E. Wilson and D. M. Reeder. (eds.). The Johns Hopkins University Press. p. 185-211.
- Kimura, M. 1980. A simple method for estimating evolutionary rate of base substitutions through comparative studies of nucleotide sequences. *Journal of Molecular Evolution* 16:111-120.
- Kumar, S., K. Tamura and M. Nei. 2004. MEGA3: Integrated software for molecular evolutionary genetics analysis and sequence alignment. *Briefings in Bioinformatics* 5:150-163.
- Matthee, C. A., B. J. Van Vuren, D. Bell and T. J. Robinson. 2004. A molecular supermatrix of the rabbits and hares (Leporidae) allows for the identification of five intercontinental exchanges during the Miocene. *Systematic Biology* 53:433-447.
- Melo-Ferreira, J., P. Boursot, E. Randi, A. Kryukov and F. Suchentrunk. 2007. The rise and fall of the mountain hare (*Lepus timidus*) during Pleistocene glaciations: expansion and retreat with hybridization in the Iberian Peninsula. *Molecular Ecology* 16:605-618.
- Nei, M. 1987. *Molecular Evolutionary Genetics*. Columbia University Press, New York.
- Posada, D. and K. A. Crandall. 1998. Modeltest: testing the model of DNA substitution. *Bioinformatics* 14:817-818.
- Posada D, and Crandall KA 1998. Modeltest: testing the model of DNA substitution. *Bioinformatics* 14:817-818
- Rico, Y., C. Lorenzo, F. X. González-Cózatl and E. Espinoza. 2008. Phylogeography and population structure of the endangered Tehuantepec jackrabbit *Lepus flavigularis*: implications for conservation. *Conservation Genetics* 9:1467-1477.
- Robinson, T. J. 1980. Comparative chromosome studies in the family Leporidae (Lagomorpha: Mammalia). *Cytogenetics and Cell Genetics* 28:64-70.
- Rodríguez, F., J. L. Oliver, A. Marín and J. R. Medina. 1990. The general stochastic model of nucleotide substitution. *Journal of Theoretical Biology* 142:485-501.
- Rozas, J. and R. Rozas. 1999. DnaSP version 3: an integrated program for molecular population genetic and molecular evolution analysis. *Bioinformatics* 15:174-175.
- Schneider, S., L. Roessli and L. Excoffier, L. 2000. ARLEQUIN, A software for population genetics data analysis. Version 2.0. Genetics and Biometry Laboratory, University of Geneva, Switzerland.
- Semarnat. 2002. NOM-059-ECOL-2001, Protección ambiental, especies nativas de México de flora y fauna silvestres - Categorías de riesgo y especificaciones para su inclusión, exclusión o cambio - Lista de especies en riesgo. *Diario Oficial de la Federación* marzo:1-85.
- Shimodaira, H. and M. Hasegawa. 1999. Multiple comparisons of log-likelihoods with applications to phylogenetic inference. *Molecular Biology and Evolution* 16:1114-1116.
- Swofford, D.L. 2002. PAUP\* Phylogenetic analysis using parsimony (\*and other methods), version 4.0b10. Sinauer, Sunderland, Massachusetts.
- Thomas, H. H. and T. L. Best. 1994. Mammalian Species, No. 465, American Society of Mammalogists. p. 1-3.
- Thompson, J. D., D. G. Higgins and T. J. Gibson. 1994. ClustalW: improving the sensitivity of progressive multiple sequence alignment through sequence weighting, position-specific gap penalties and weight matrix choice. *Nucleic Acids Research* 22:4673-4680.
- Thulin, C. G., M. Jaarola and H. Tegelström. 1997. The occurrence of mountain hare mitochondrial DNA in wild brown hares. *Molecular Ecology* 6:463-467.
- Thulin, C. G. and H. Tegelstr. 2002. Biased geographical distribution of mitochondrial DNA that passed the species barrier from mountain hares to brown hares (genus *Lepus*): an effect of genetic incompatibility and mating behaviour?

- Journal of Zoology 258:299-306.
- Thulin, C. G., M. Fang and A. Averianov. 2006. Introgression from *Lepus europaeus* to *L. timidus* in Russia revealed by mitochondrial single nucleotide polymorphisms and nuclear microsatellites. *Hereditas* 143:68-76.
- White, J. A. and B. L. Keller. 1984. Evolutionary stability and ecological relationships of morphology in North American Lagomorpha. Special Publication, Carnegie Museum Natural History 9:58-66.
- Wu, C., J. Wu, T. D Bunch, Q. Li, Y. Wang and Y. Zhang. 2005. Molecular phylogenetics and biogeography of *Lepus* in Eastern Asia based on mitochondrial DNA sequences. *Molecular Phylogenetics and Evolution* 37:45-61.
- Yamada, F., M. Takaki and H. Suzuki. 2002. Molecular phylogeny of Japanese Leporidae, the Amami rabbit *Pentalagus furnesi*, the Japanese hare *Lepus brachiurus*, and the mountain hare *Lepus timidus*, inferred from mitochondrial DNA sequences. *Genes and Genetic Systems* 77:107-116.

